

CONTRACT NO. **B-20401**

INDIANA
DEPARTMENT OF
TRANSPORTATION

BRIDGE PLANS
FOR SPANS OVER 20 FEET
ON
STATE ROAD NO. 13
PROJECT NO. STP/4585(004)

REF. POINT: 68+70

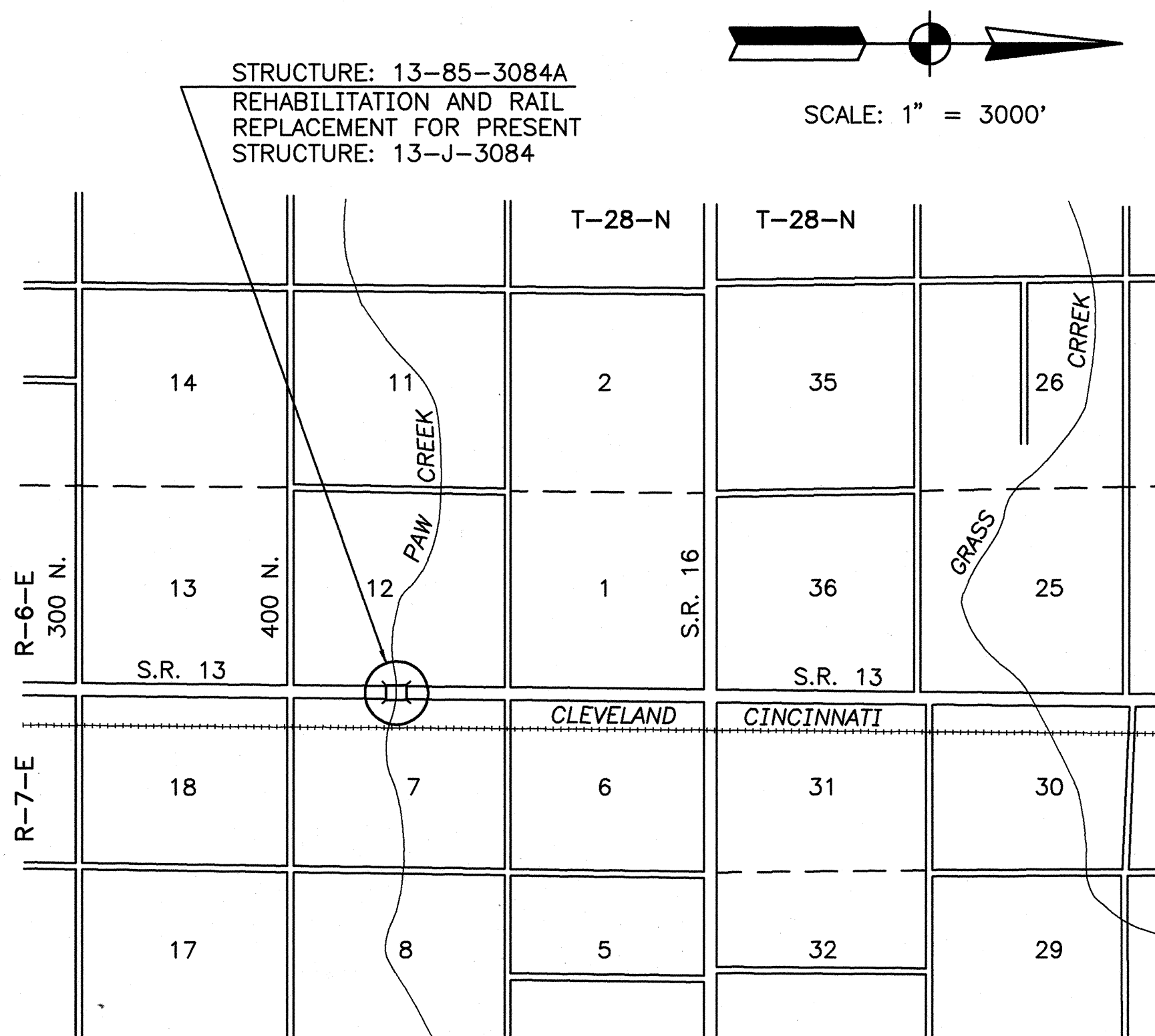
REHABILITATION AND RAIL REPLACEMENT FOR BRIDGE ON SR 13
OVER PAW PAW CREEK APPROXIMATELY 1.7 MILES SOUTH OF SR 16, LOG
MILE 17.04, ALL IN SECTIONS 7 AND 12, T-28-N, R-6/7-E, WABASH COUNTY.

INDEX					
PROJECT	STRUCTURE	TYPE	SPAN	OVER	STATION
STP/4585(004)	13-85-3084A	REHABILITATION AND RAIL REPLACEMENT	1 SPAN @ 40'-0"	PAW PAW CREEK	28+35
SHEET NO.	SHEET DESIGNATION	SUBJECT			F.H.W.A. APPROVAL
1	ONE SHEET	TITLE SHEET AND INDEX			
2	ONE SHEET	DETOUR DETAILS			
3	C-1	LAYOUT			
4	C-2	GENERAL PLAN - SHEET 1			
5	C-3	GENERAL PLAN - SHEET 2			
6	C-4	FLOOR SLAB DETAILS			
7	C-5	R. C. BRIDGE APPROACH DETAILS			
8	C-6	CONCRETE BRIDGE RAIL DETAILS			

FEDERAL ROAD REGION NO.	STATE	PROJECT NO.	FISCAL YEAR	SHEET NO.	TOTAL SHEETS
5	IND	STP/4585(004)		1	36

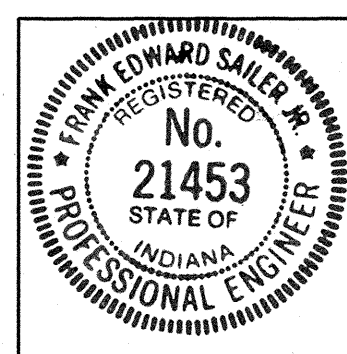
INDEX CONTINUED STANDARD DRAWINGS					
SHEET NO.	SHEET DESIGNATION	SUBJECT	F.H.W.A. APPROVAL	ADOPTED "A" REVISION "R"	
9	BRIDGE STD. BR-1	CONCRETE BRIDGE RAILING TRANSITION TYPE TGB	3-9-93	A AUG. 1992	
10	BRIDGE STD. BR-1A	CONCRETE BRIDGE RAILING TRANSITION TYPE TGB	3-9-93	A AUG. 1992	
	BRIDGE STD. BR-2	CONCRETE BRIDGE RAILING TRANSITION TYPE WGB			
	BRIDGE STD. BR-2A	CONCRETE BRIDGE RAILING TRANSITION TYPE WGB			
11	BRIDGE STD. C-1	MISCELLANEOUS BRIDGE STANDARDS	1-26-93	A DEC. 1992	
	BRIDGE STD. C-2	STANDARD MISCELLANEOUS DETAILS			
12	BRIDGE STD. C-3	MISCELLANEOUS BRIDGE STANDARDS	1-26-95	R 1-3-95	
	BRIDGE STD. C-4	PRESTRESSED CONCRETE PILES			
	BRIDGE STD. C-5	PRECAST DECK PANEL DETAILS			
	BRIDGE STD. D	CASTING DETAILS, ROADWAY DRAINS			
	BRIDGE STD. D-1	ADJUSTING FRAME DETAILS FOR ROADWAY DRAINS			
	BRIDGE STD. PB	PRESTRESSED CONCRETE TYPE I-BEAMS			
	BRIDGE STD. PB	PRESTRESSED CONCRETE TYPE I-BEAMS			
	BRIDGE STD. PB	PRESTRESSED CONCRETE TYPE I-BEAMS			
	BRIDGE STD. PB-6	PRESTRESSED BOX BEAMS			
	BRIDGE STD. PB	PRESTRESSED COMPOSITE BOX BEAMS WIDE			
	BRIDGE STD. PB	PRESTRESSED COMPOSITE BOX BEAMS WIDE			
	BRIDGE STD. PB	PRESTRESSED COMPOSITE BOX BEAMS WIDE			
	BRIDGE STD. PB-10	TOLERANCES FOR FABRICATION OF PRESTRESSED BEAMS			
	BRIDGE STD. PB-11	ELASTOMERIC BEARING PAD DETAILS			
	BRIDGE STD. R-2B	BRIDGE LIGHTING DETAILS			
	BRIDGE STD. S-1	MISCELLANEOUS DETAILS			
	BRIDGE STD. SH-1	STEEL SHOE DETAILS			
	BRIDGE STD. SS-1	STRUCTURAL EXPANSION JOINTS CLASS SS, SHEET 1			
	BRIDGE STD. SS-2	STRUCTURAL EXPANSION JOINTS CLASS SS, SHEET 2			
	BRIDGE STD. T SHEET A	STANDARD PAVEMENT JOINTS			
	BRIDGE STD. T SHEET B	STANDARD PAVEMENT JOINTS			
	TRAFFIC STD. SHEET MH-1	MISCELLANEOUS STANDARDS			
	TRAFFIC STD. SHEET MT-3	MISCELLANEOUS TRAFFIC STANDARDS			
	TRAFFIC STD. SHEET MT-18	MISCELLANEOUS TRAFFIC STANDARDS			
	TRAFFIC STD. SHEET MT-19	MISCELLANEOUS TRAFFIC STANDARDS			
	TRAFFIC STD. SHEET MT-20	MISCELLANEOUS TRAFFIC STANDARDS			
	TRAFFIC STD. SHEET MT-21	MISCELLANEOUS TRAFFIC STANDARDS			
13	ROAD STD. SHEET CCPJ-1	LONGITUDINAL JOINT	*	R 9-1-95	
	ROAD STD. SHEET CCPJ-2	LONGITUDINAL CONSTRUCTION JOINT			
	ROAD STD. SHEET CCPJ-3	TYPE D-1 CONTRACTION JOINT			
14	ROAD STD. SHEET CCPJ-4	TRANSVERSE CONSTRUCTION JOINT	*	R 9-1-95	
	ROAD STD. SHEET CCPJ-5	EXPANSION JOINT			
	ROAD STD. SHEET CCPJ-6	CONCRETE PAVEMENT PATCH DETAILS			
	ROAD STD. SHEET JTS-B	TERMINAL JOINTS			
15	ROAD STD. SHEET RCBA-1	REINFORCED CONCRETE BRIDGE APPROACH	*	R 10-2-95	
16	ROAD STD. SHEET RCBA-2	REINFORCED CONCRETE BRIDGE APPROACH	*	R 11-1-95	
	ROAD STD. SHEET	MISCELLANEOUS DETAILS			
17	ROAD STD. SHEET ME-2	MISCELLANEOUS DETAILS	6-27-85	R 9-4-84	
	ROAD STD. SHEET	MISCELLANEOUS DETAILS			
18	ROAD STD. SHEET MN	MISCELLANEOUS DETAILS	9-24-85	R 6-3-85	
	ROAD STD. SHEET	MISCELLANEOUS DETAILS			
19	ROAD STD. SHEET MP	MISCELLANEOUS DETAILS	3-20-95	R 3-1-95	
	ROAD STD. SHEET	MISCELLANEOUS DETAILS			
20	ROAD STD. SHEET MT-3	MISCELLANEOUS DETAILS	8-5-88	R 8-1-88	
	ROAD STD. SHEET	MISCELLANEOUS DETAILS			
21	ROAD STD. SHEET MT-18	MISCELLANEOUS DETAILS	1-6-88	A NOV. 1987	
22	ROAD STD. SHEET MT-19	MISCELLANEOUS DETAILS	1-6-88	A NOV. 1987	
23	ROAD STD. SHEET G-1	W-BEAM GUARDRAIL COMPONENTS	3-9-93	A AUG. 1992	
24	ROAD STD. SHEET G-2	THREE-BEAM GUARDRAIL COMPONENTS	7-20-92	A DEC. 1991	
25	ROAD STD. SHEET G-3	W-BEAM GUARDRAIL ASSEMBLIES	7-20-92	A DEC. 1991	
26	ROAD STD. SHEET T-1	GUARDRAIL TRANSITION TYPE TGB	3-9-93	A AUG. 1992	
	ROAD STD. SHEET T-1A	GUARDRAIL TRANSITION TYPE WGB			
	ROAD STD. SHEET T-2	GUARDRAIL TRANSITION TYPE GP			
	ROAD STD. SHEET T-3	GUARDRAIL TRANSITION TYPE VH			
	ROAD STD. SHEET T-4	PIER CONNECTION DETAILS			
27	ROAD STD. SHEET E-1	GUARDRAIL END TREATMENT TYPE I	*	R 11-1-95	
	ROAD STD. SHEET E-2	GUARDRAIL END TREATMENT TYPE OS			
28	ROAD STD. SHEET E-4	CURVED W-BEAM GUARDRAIL SYSTEM	3-9-93	A AUG. 1992	
29	ROAD STD. SHEET E-4A	CURVED W-BEAM GUARDRAIL SYSTEM	3-9-93	A AUG. 1992	
30	ROAD STD. SHEET E-4B	CURVED W-BEAM GUARDRAIL SYSTEM	3-9-93	A AUG. 1992	
31	ROAD STD. SHEET B-1	BRIDGE APPROACH GUARDRAIL	3-9-93	A AUG. 1992	
	ROAD STD. SHEET CB-1	CONCRETE MEDIAN BARRIER			
	ROAD STD. SHEET CB-2	TEMPORARY CONCRETE BARRIER			
	ROAD STD. SHEET CB-2A	TEMPORARY CONCRETE BARRIER			
32	ROAD STD. SHEET 1 DETOURS	STANDARD DETOUR SIGNS	*	A SEP. 1988	
	ROAD STD. SHEET 1A DETOURS	STANDARD DETOUR SIGNS			
	ROAD STD. SHEET 1B DETOURS	STANDARD DETOUR SIGNS			
	ROAD STD. SHEET 2 DETOURS	STANDARD DETOUR SIGNS			
33	ROAD STD. SHEET 2A DETOURS	STANDARD DETOUR SIGNS	*	R 10-2-95	
34	ROAD STD. SHEET 3 DETOURS	STANDARD DETOUR SIGNS	*	R 9-01-88	
35	ROAD STD. SHEET 3A DETOURS	STANDARD DETOUR SIGNS	*	R 9-01-88	
	ROAD STD. SHEET 4 DETOURS	STANDARD DETOUR SIGNS			
36	ROAD STD. SHEET 5 DETOURS	STANDARD DETOUR SIGNS	*	R 9-01-88	
	ROAD STD. SHEET 5A DETOURS	STANDARD DETOUR SIGNS			

TRAFFIC DATA	
A.A.D.T. (1994)	4100 V.P.D.
A.A.D.T.	V.P.D.
D.H.V.	V.P.H.
DIRECTIONAL DISTRIBUTION	%
TRUCKS	% D.H.V.
DESIGN DATA	
POSTED SPEED	55 M.P.H.
PROJECT DESIGN CRITERIA	3R (NON-FREEWAY)
FUNCTIONAL CLASSIFICATION	STATE COLLECTOR
RURAL / URBAN	RURAL
TERRAIN	LEVEL
ACCESS CONTROL	NONE



WABASH COUNTY

PLANS PREPARED BY:
FLOYD E. BURROUGHS & ASSOC., INC.
CONSULTING ENGINEERS
5160 EAST 65TH STREET
INDIANAPOLIS, INDIANA 46220
(317) 849-9722
CERTIFIED *Frank E. Sailer Jr.* DATE October 13, 1995



REVISIONS SHEET NO.	
DATE	STANDARD DRAWINGS
01-18-96	STANDARD DRAWINGS

REVISIONS SHEET NO.	
DATE	STANDARD DRAWINGS

INDIANA DEPARTMENT OF TRANSPORTATION
STANDARD SPECIFICATIONS DATED 1995
TO BE USED WITH THESE PLANS.

* = F.H.W.A. APPROVAL PENDING

APPROVED FOR LETTING:
Phyllis H. Kliska
CHIEF DIVISION OF DESIGN, INDOT

FEDERAL HIGHWAY ADMINISTRATION
DEPARTMENT OF TRANSPORTATION

APPROVED: _____

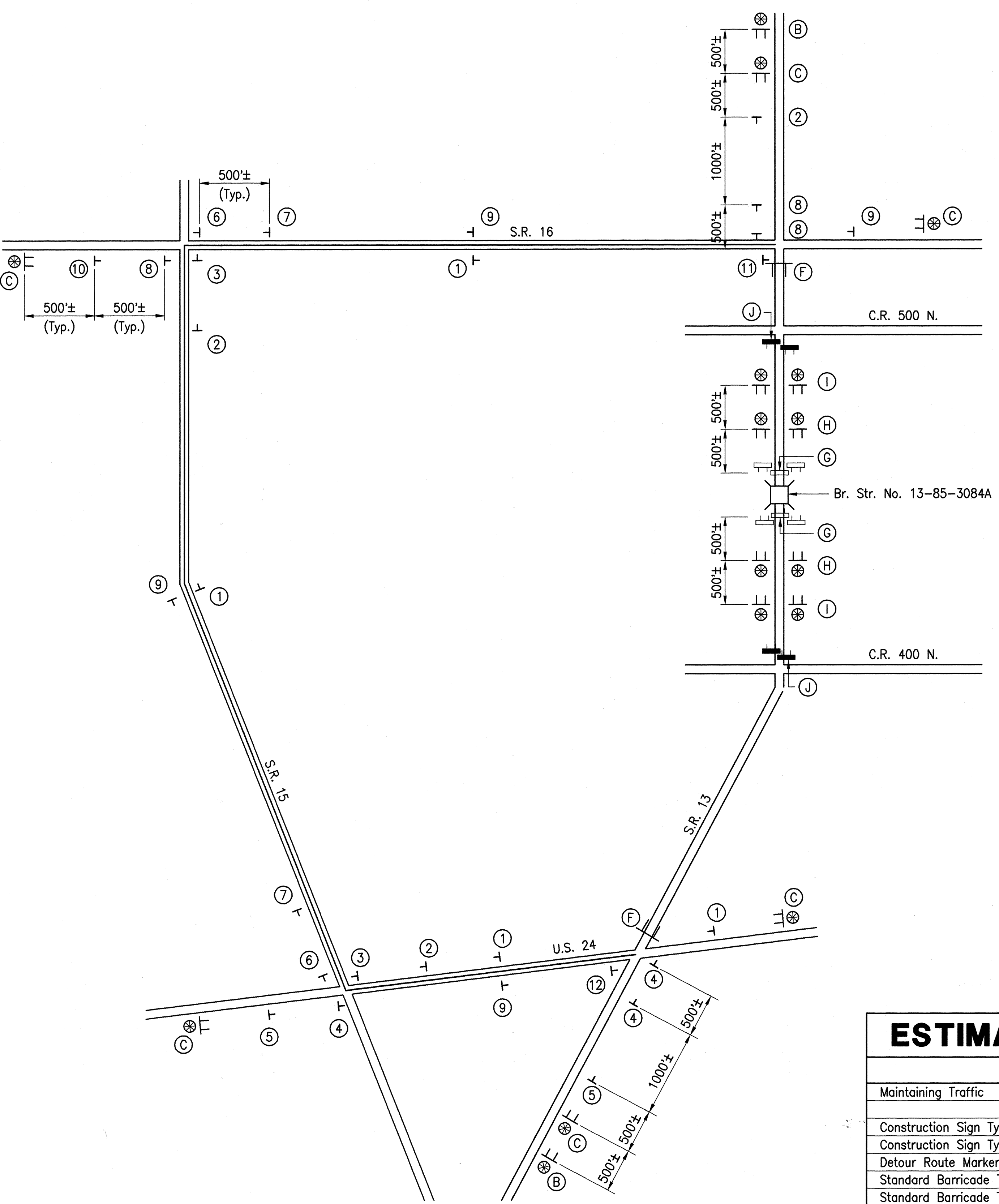
DIVISION ADMINISTRATOR _____ DATE _____

BRIDGE FILE: 13-85-3084A

DETOUR ROUTE MARKER ASSEMBLIES *

① DETOUR NORTH INDIANA 13 ↑	XM4-8 24" x 12" M3-1(S) 24" x 12" M1-I6 24" x 24" M6-3(S) 21" x 15"	② DETOUR NORTH INDIANA 13 ↗	XM4-8 24" x 12" M3-1(S) 24" x 12" M1-I6 24" x 24" M5-1(R)(S) 21" x 15"
③ DETOUR NORTH INDIANA 13 →	XM4-8 24" x 12" M3-1(S) 24" x 12" M1-I6 24" x 24" M6-1(S) 21" x 15"	④ DETOUR NORTH INDIANA 13 ←	XM4-8 24" x 12" M3-1(S) 24" x 12" M1-I6 24" x 24" M6-1(S) 21" x 15"
⑤ DETOUR NORTH INDIANA 13 ↙	XM4-8 24" x 12" M3-1(S) 24" x 12" M1-I6 24" x 24" M5-1(L)(S) 21" x 15"	⑥ DETOUR SOUTH INDIANA 13 ←	XM4-8 24" x 12" M3-3(S) 24" x 12" M1-I6 24" x 24" M6-1(S) 21" x 15"
⑦ DETOUR SOUTH INDIANA 13 ↘	XM4-8 24" x 12" M3-3(S) 24" x 12" M1-I6 24" x 24" M5-1(L)(S) 21" x 15"	⑧ DETOUR SOUTH INDIANA 13 →	XM4-8 24" x 12" M3-3(S) 24" x 12" M1-I6 24" x 24" M6-1(S) 21" x 15"
⑨ DETOUR SOUTH INDIANA 13 ↑	XM4-8 24" x 12" M3-3(S) 24" x 12" M1-I6 24" x 24" M6-3-A(S) 30" x 21"	⑩ DETOUR SOUTH INDIANA 13 ↗	XM4-8 24" x 12" M3-3(S) 24" x 12" M1-I6 24" x 24" M5-1(R)(S) 21" x 15"
⑪ END DETOUR NORTH INDIANA 13	XM4-8a 24" x 18" M3-1(S) 24" x 12" M1-I6 24" x 24"	⑫ END DETOUR SOUTH INDIANA 13	XM4-8a 24" x 18" M3-3(S) 24" x 12" M1-I6 24" x 24"

* TO BE PAID FOR AS "DETOUR ROUTE ASSEMBLY", EACH.



TRAFFIC DETOUR

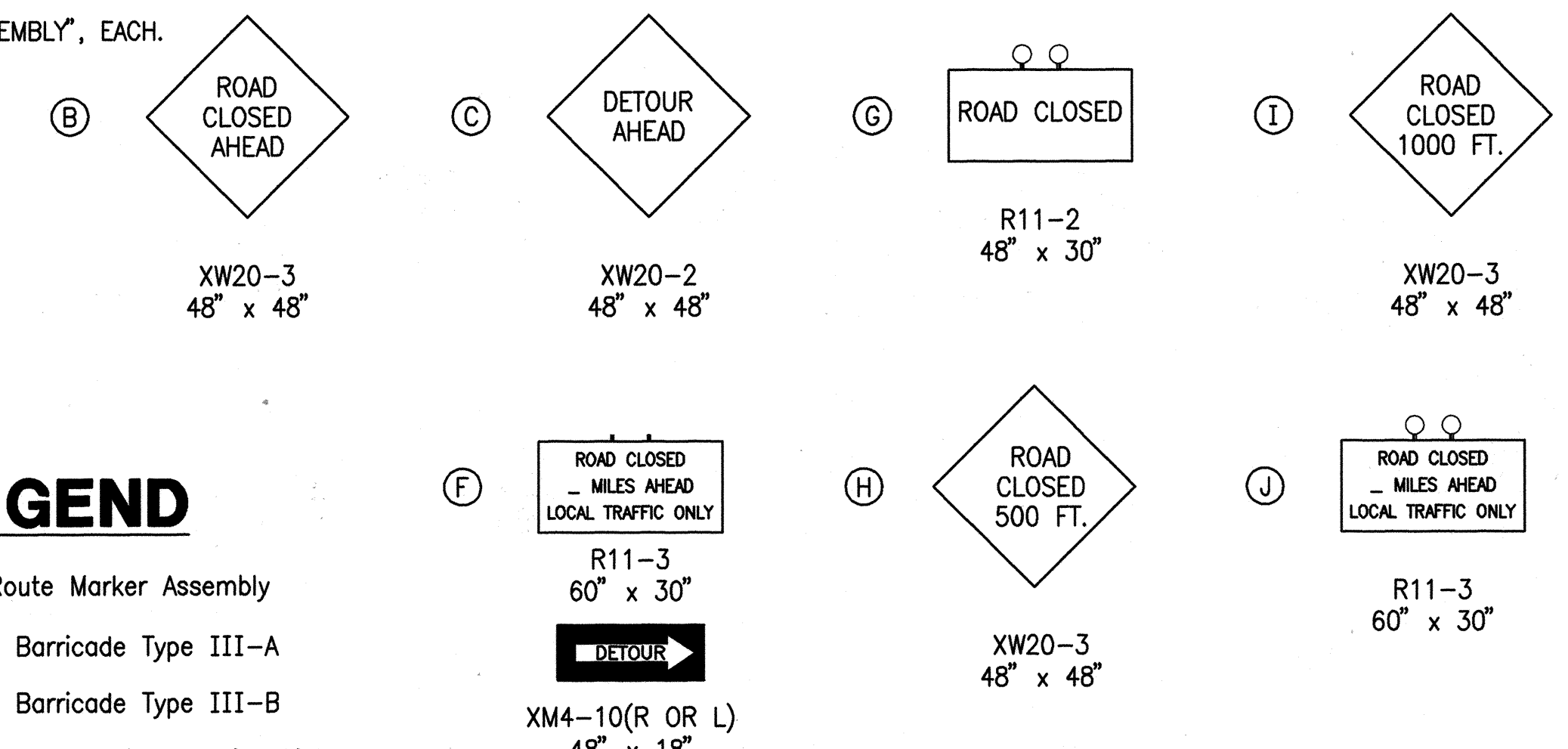
ESTIMATE OF QUANTITIES

ITEM	UNIT	TOTAL
Maintaining Traffic	LSUM	1
Construction Sign Type A	EACH	18
Construction Sign Type B	EACH	1
Detour Route Marker Assembly	EACH	28
Standard Barricade Type III-A	EACH	6
Standard Barricade Type III-B	EACH	4
Road Closure Sign Assembly	EACH	4
Line, Paint, Solid, White, 4"	LFT	500
Line, Paint, Broken, Yellow, 4"	LFT	60
Snowplowable Raised Pavement Markers, Remove	EACH	4
Snowplowable Raised Pavement Markers	EACH	4

LEGEND

- T Detour Route Marker Assembly
- ▬ Standard Barricade Type III-A
- ▬ Standard Barricade Type III-B
- ⊗ Type "A" Construction Warning Light
- ⊙ Type "B" Construction Warning Lights
- TT Typical Sign Standard

NOTE:
2-LANE CLOSURE NOTICE
SIGNS XG20-5 REQUIRED
TO BE PLACED AS DIRECTED
BY THE ENGINEER



DETOUR DETAILS INDIANA DEPARTMENT OF TRANSPORTATION

SCALE: AS NOTED DATE: October 13, 1995

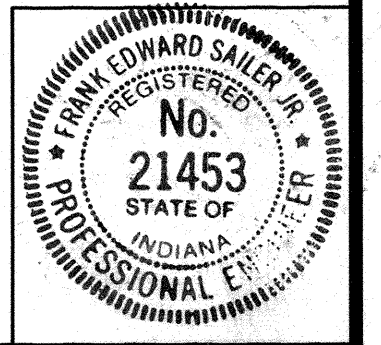
Frank E. Sailer Jr.

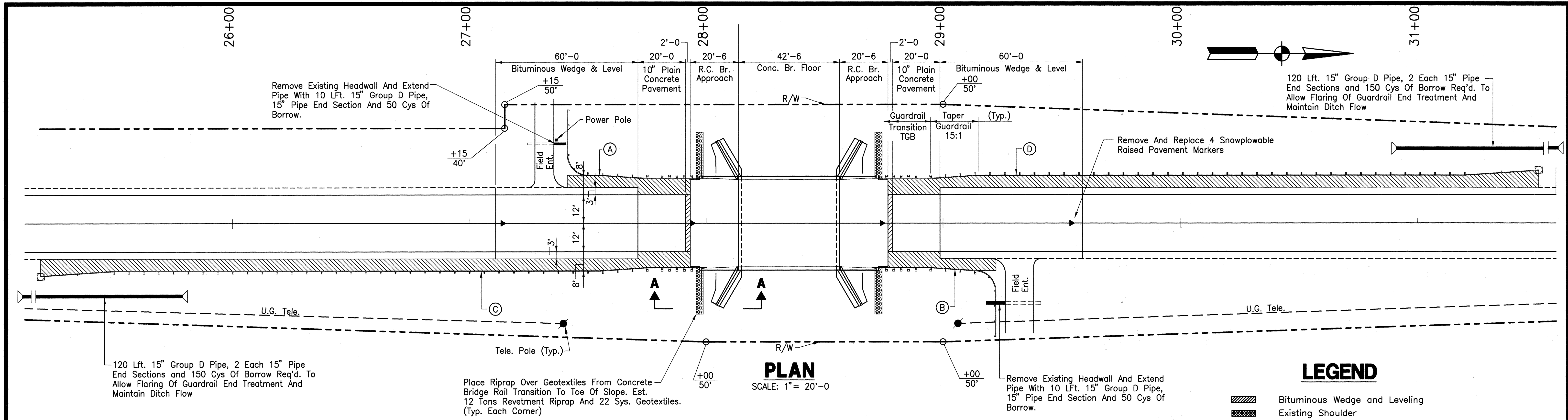
DRAWING: OF SHEET: 2 OF 36

PROJECT: STP/4585(004)

BRIDGE CONTRACT NO. B-20401

BRIDGE FILE: 13-85-3084A

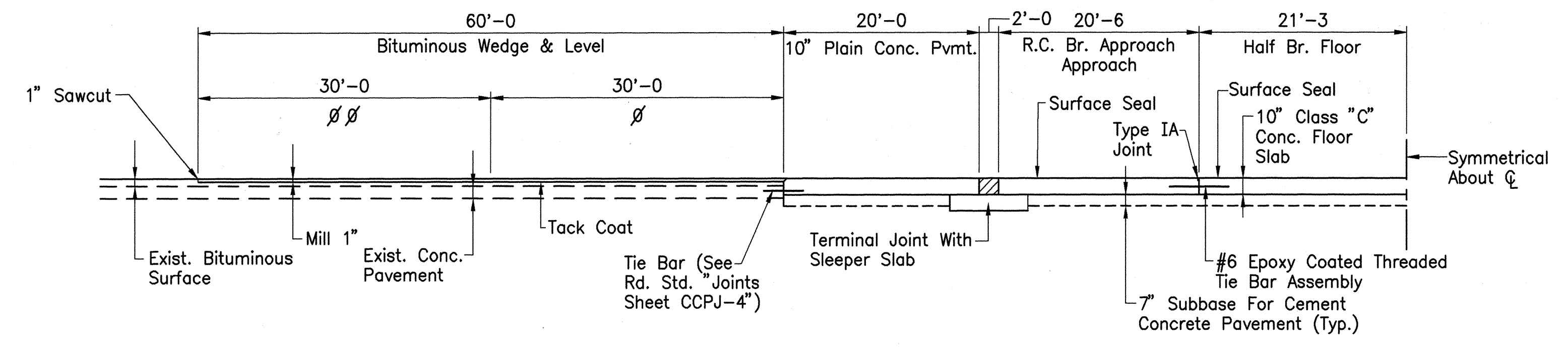




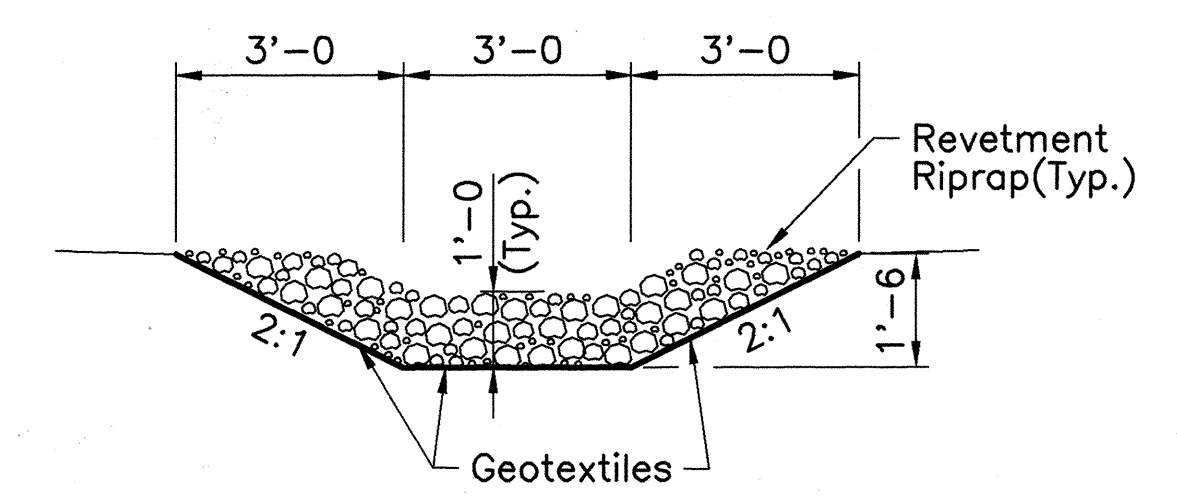
PLAN
SCALE: 1" = 20'-0"

LEGEND

- Bituminous Wedge and Leveling
- Existing Shoulder
- Bituminous Shoulder
- Terminal Joint With Sleeper Slab
- Surface to be a continuation of Bridge Deck Profile
- Taper Wedge Uniformly to meet Existing Roadway Surface



HALF LONGITUDINAL SECTION
NO SCALE



SECTION A-A
Scale: 3/8" = 1'-0"

GUARDRAIL LEGEND

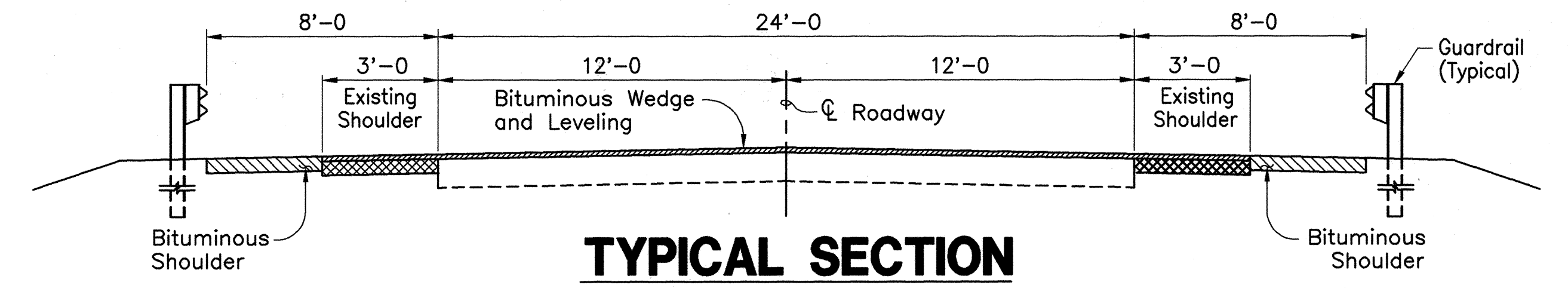
- (A) 1 EA Guardrail, Transition, Type TGB
25 LF Guardrail, W-Beam, 6'-3 Spacing
1 EA Curved W-Beam Guardrail Connector System Type 2
90 LF Removal of Guardrail
- (B) 1 EA Guardrail, Transition, Type TGB
18.75 LF Guardrail, W-Beam, 6'-3 Spacing
1 EA Curved W-Beam Guardrail Terminal System Type 2
65 LF Removal of Guardrail
- (C) 1 EA Guardrail, Transition, Type TGB
225 LF Guardrail, W-Beam, 6'-3 Spacing
1 EA Guardrail, End Treatment, Type I
140 LF Removal of Guardrail
- (D) 1 EA Guardrail, Transition, Type TGB
225 LF Guardrail, W-Beam, 6'-3 Spacing
1 EA Guardrail, End Treatment, Type I
140 LF Removal of Guardrail

GUARDRAIL SUMMARY

- 4 EA Guardrail, Transition, Type TGB
 - 493.75 LF Guardrail, W-Beam, 6'-3 Spacing
 - 2 EA Curved W-Beam Guardrail Terminal System Type 2
 - 2 EA Guardrail, End Treatment, Type I
 - 435 LF Removal of Guardrail
- For Details Of Grading At Guardrail End Treatment Type I, See Drawing C-3.

BITUMINOUS MIXTURE FOR APPROACHES, LV

BITUMINOUS WEDGE AND LEVEL	22.0 TONS
BITUMINOUS SHOULDER	124.6 TONS
TOTAL =	146.6 TONS



TYPICAL SECTION
SCALE: 1/4" = 1'-0"

LAYOUT
INDIANA DEPARTMENT OF TRANSPORTATION

SCALE: AS NOTED DATE: October 13, 1995

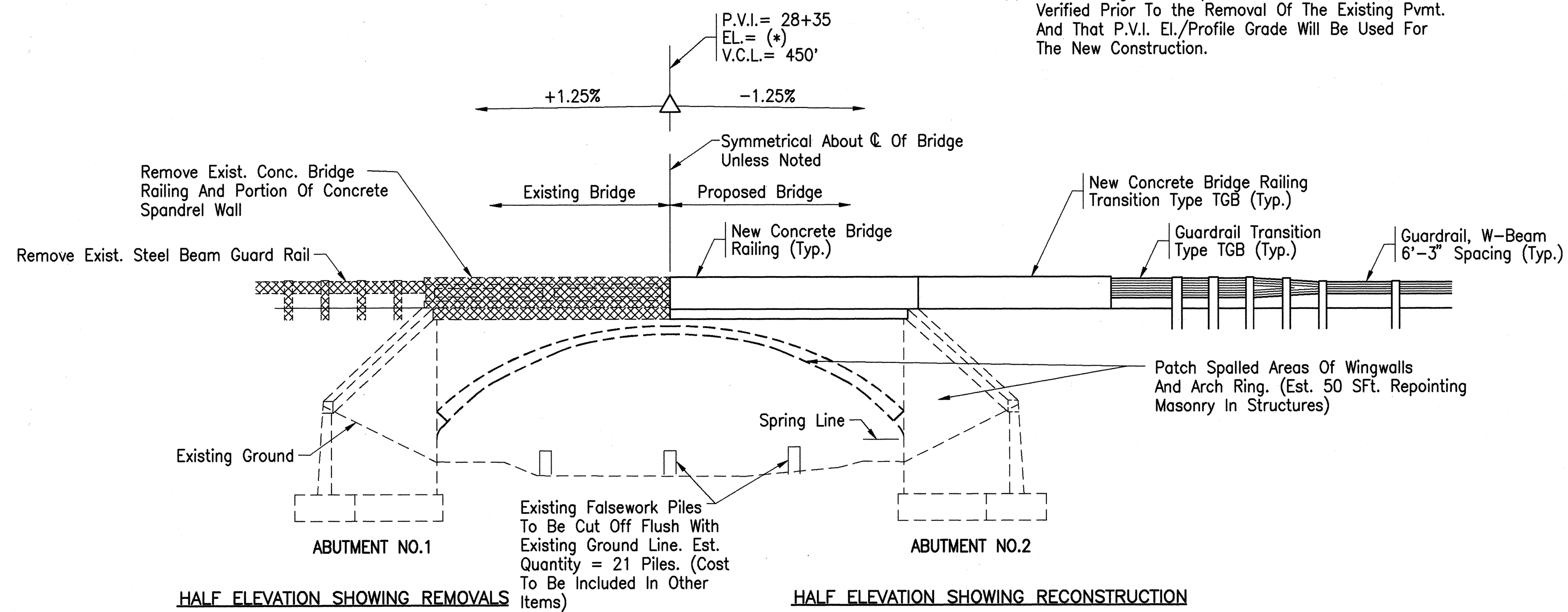
DRAWING: C-1 OF C-6 SHEET: 3 OF 36
PROJECT: STP/4585(004)
BRIDGE CONTRACT NO. B-20401
BRIDGE FILE: 13-85-3084A



DESIGNED	SLO/VAD	CHK'D	
DRAWN	9002	CHK'D	
PROJECT	9002	FILE	9002LAY1

STRUCTURE TO BE BUILT TO A 450' V.C.

(*)-The Existing P.V.I. El./Profile Grade Will Be Field Verified Prior To the Removal Of The Existing Pvmnt. And That P.V.I. El./Profile Grade Will Be Used For The New Construction.

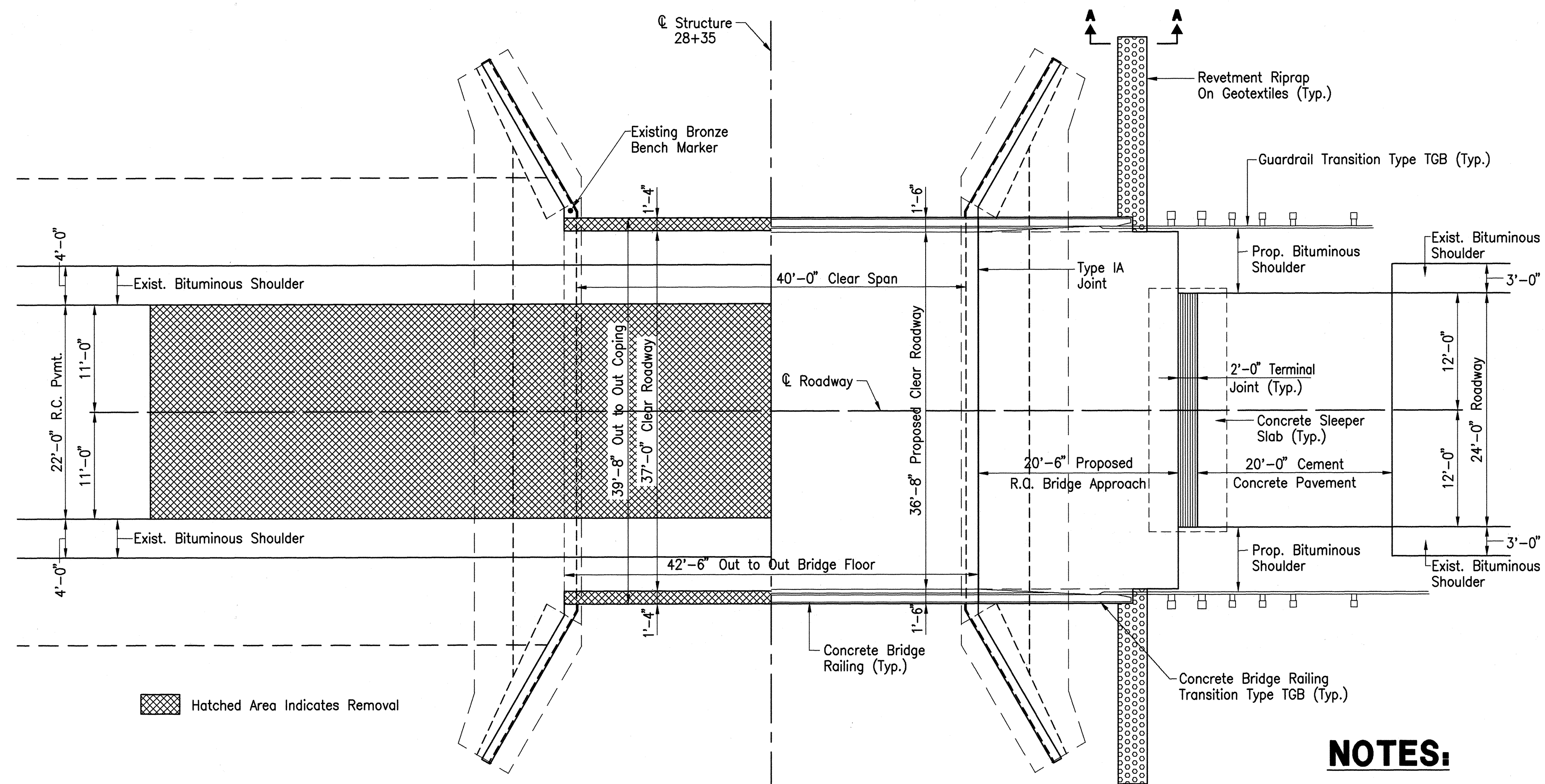


HALF ELEVATION SHOWING REMOVALS

HALF ELEVATION SHOWING RECONSTRUCTION

ELEVATION

Scale: 1/8" = 1'-0"



HALF PLAN SHOWING REMOVALS

PLAN

Scale: 1/8" = 1'-0"

HALF PLAN SHOWING RECONSTRUCTION

NOTES:

See Drawing C-1 For "Section A-A" Details.

GENERAL NOTES

- Plans for the existing structure are on file in the Central Office as Bridge File 13-J-3084 and are available on request.
- Where new work is to be fitted to old work, the Contractor shall check all dimensions and conditions in the field and report any errors or discrepancies to the Engineer and assume responsibility for their correctness and the fit of the new part to the old.
- Chamfer exposed edges 1 inch unless noted.
- Concrete in barrier rail and floor slab to be Class C.
- Reinforcing steel cover shall be 2 inches unless noted.
- All bituminous material required in this contract to be included in the pay item "Bituminous Mixture for Approaches - LV" except Tack Coat which will be paid for separately.
- Clean and seal all concrete area from 6" of underside of arch, includes concrete railings, bridge floor, copings, and spandrel walls as shown on the plans.
Clean and seal 10" r.c. pavement.
Clean and seal exposed face of wingwalls.
Estimated Quantity of surface seal= 4611 SFT.
- The clear zone is incoming shoulder 33 feet.
outgoing shoulder 33 feet.

DESIGN DATA

ALLOWABLE DESIGN STRESSES:

Class "A" Concrete	f'c=	3,500 psi
Class "B" Concrete	f'c=	3,000 psi
Class "C" Concrete	f'c=	4,000 psi
Reinforcing Steel (Grade 60)	fy=	60,000 psi

GENERAL PLAN - SHEET 1 REHABILITATION AND RAIL REPLACEMENT REINFORCED CONCRETE ARCH BRIDGE

1 SPAN @ 40'-0"
SKEW: SQUARE
STATE ROAD 13
OVER
36'-8" CLEAR ROADWAY
PAW-PAW CREEK

**INDIANA DEPARTMENT OF TRANSPORTATION
WABASH COUNTY**

SCALE: AS NOTED DATE: October 13, 1995

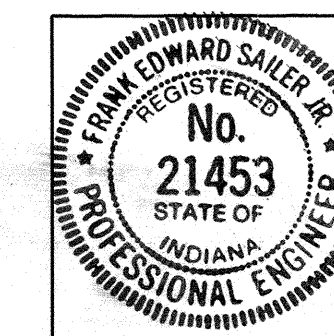
Frank E. Dainoff

DRAWING: C-2 OF C-6 SHEET: 4 OF 36

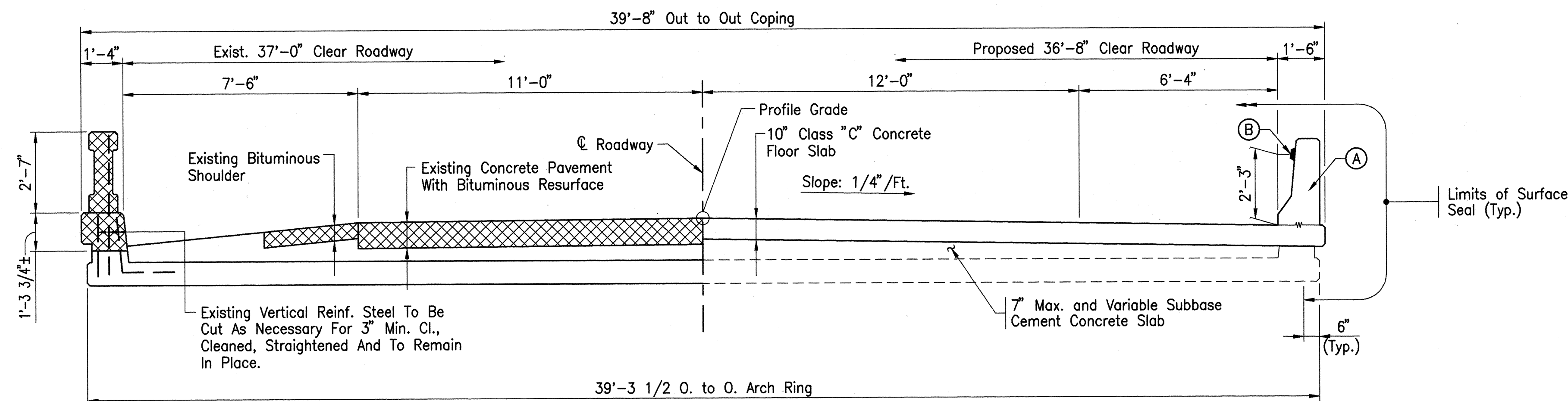
PROJECT: STP/4585(004)

BRIDGE CONTRACT NO. B-20401

BRIDGE FILE: 13-85-3084A



DESIGNED	SLO/MBW	C'D	
DRAWN	9002	C'D	
PROJECT	FILE	GP1	



HALF SECTION SHOWING REMOVALS

HALF SECTION SHOWING RECONSTRUCTION

TYPICAL SECTION

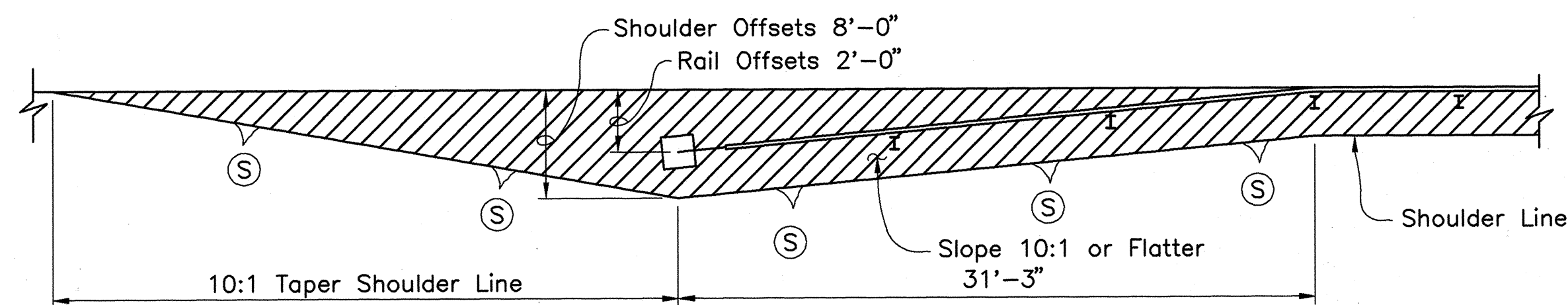
Scale: 3/8" = 1'-0"

LEGEND

- (A) Proposed Concrete Bridge Rail
- (B) Barrier Rail Delineators
Spa. @ 20'-0" c. to c.
- Hatched Area
Indicates Removal

STANDARD DRAWINGS

BRIDGE	ROAD	PURPOSE
BR-1		Concrete Bridge Railing Transition Type TGB
BR-1A		Concrete Bridge Railing Transition Type TGB
C-1		Reinforcing Bar Notes
C-3		Constr. Jt. Type A, Optional Railing Vert. Reinf. Splice
CCPJ-1		Longitudinal Joint
CCPJ-4		Transverse Construction Joint
RCBA-1		Reinforced Concrete Bridge Approach
RCBA-2		Reinforced Concrete Bridge Approach
ME-2		Pipe End Sections
MN		Backfill For Structures
MP		Pipe Groups
MT-3		Sign ReflectORIZATION Schedule
MT-18		Snowplowable Raised Pavement Markers
MT-19		Snowplowable Raised Pavement Markers
G-1		W-Beam Guardrail Components
G-2		Three-Beam Guardrail Components
G-3		W-Beam Guardrail Assemblies
T-1		Guardrail Transition Type TGB
E-1		Guardrail End Treatment Type I
E-4		Curved W-Beam Guardrail System
E-4A		Curved W-Beam Guardrail System
E-4B		Curved W-Beam Guardrail System
B-1		Bridge Approach Guardrail
Sht 1 Det		Standard Detour Signs
Sht 2A Det		Standard Detour Signs
Sht 3 Det		Standard Detour Signs
Sht 3A Det		Standard Detour Signs
Sht 5 Det		Standard Detour Signs



GUARDRAIL END TREATMENT DETAIL

NO SCALE

(S) 2:1 Slope Max.

**GENERAL PLAN - SHEET 2
REHABILITATION AND RAIL REPLACEMENT
REINFORCED CONCRETE ARCH BRIDGE**

1 SPAN @ 40'-0" OVER 36'-8" CLEAR ROADWAY
SKEW: SQUARE STATE ROAD 13 OVER PAW-PAW CREEK

**INDIANA DEPARTMENT OF TRANSPORTATION
WABASH COUNTY**

SCALE: AS NOTED DATE: October 13, 1995

Frank E. Seales Jr.

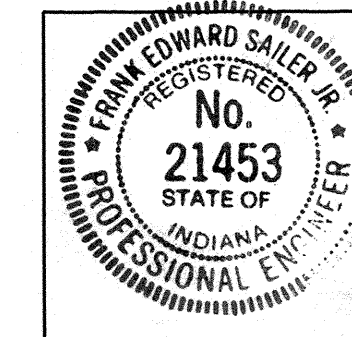
DRAWING: C-3 OF C-6 SHEET: 5 OF 36

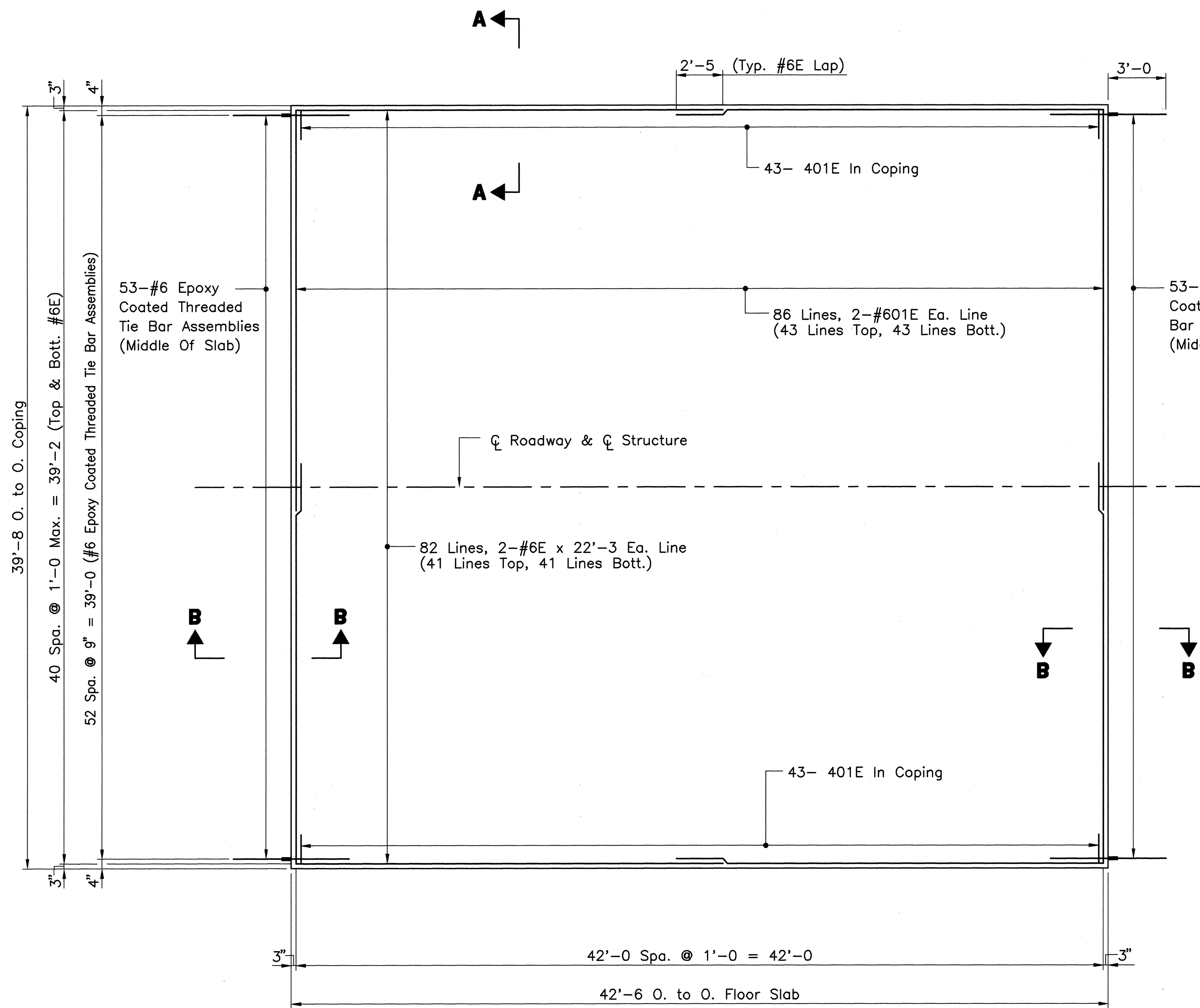
PROJECT: STP/4585(004)

BRIDGE CONTRACT NO. B-20401

BRIDGE FILE: 13-85-3084A

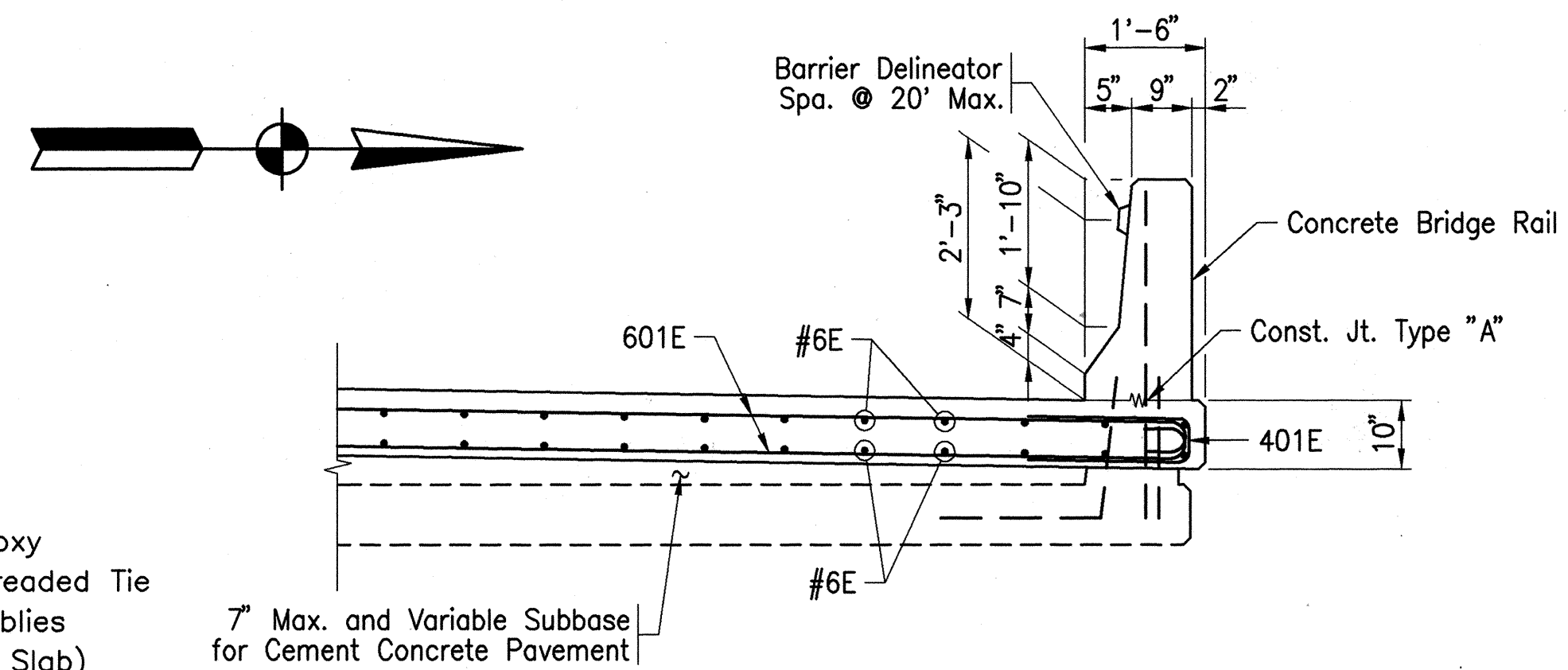
DESIGNED	MBW	CHECKED	SLO
DRAWN	9002	FILE	GP2





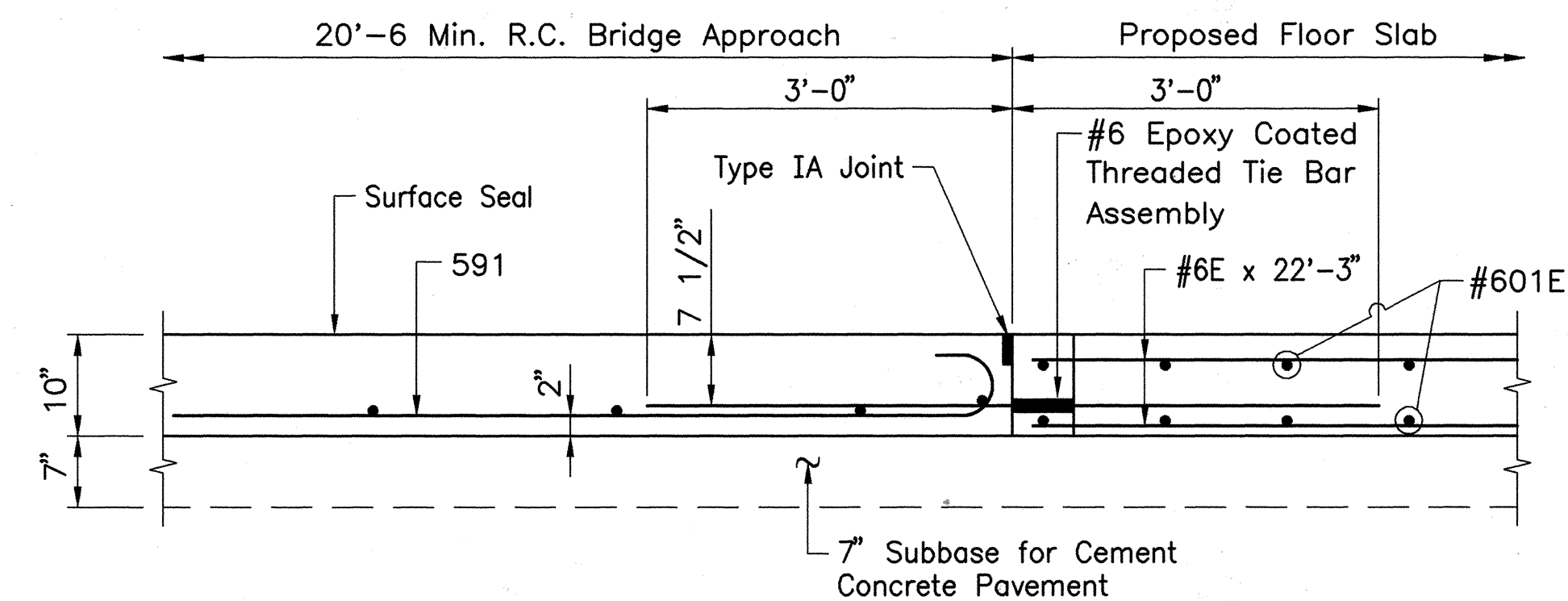
FLOOR SLAB PLAN

SCALE: 1/4" = 1'-0"



SECTION A-A

SCALE: 3/4" = 1'-0"



SECTION B-B

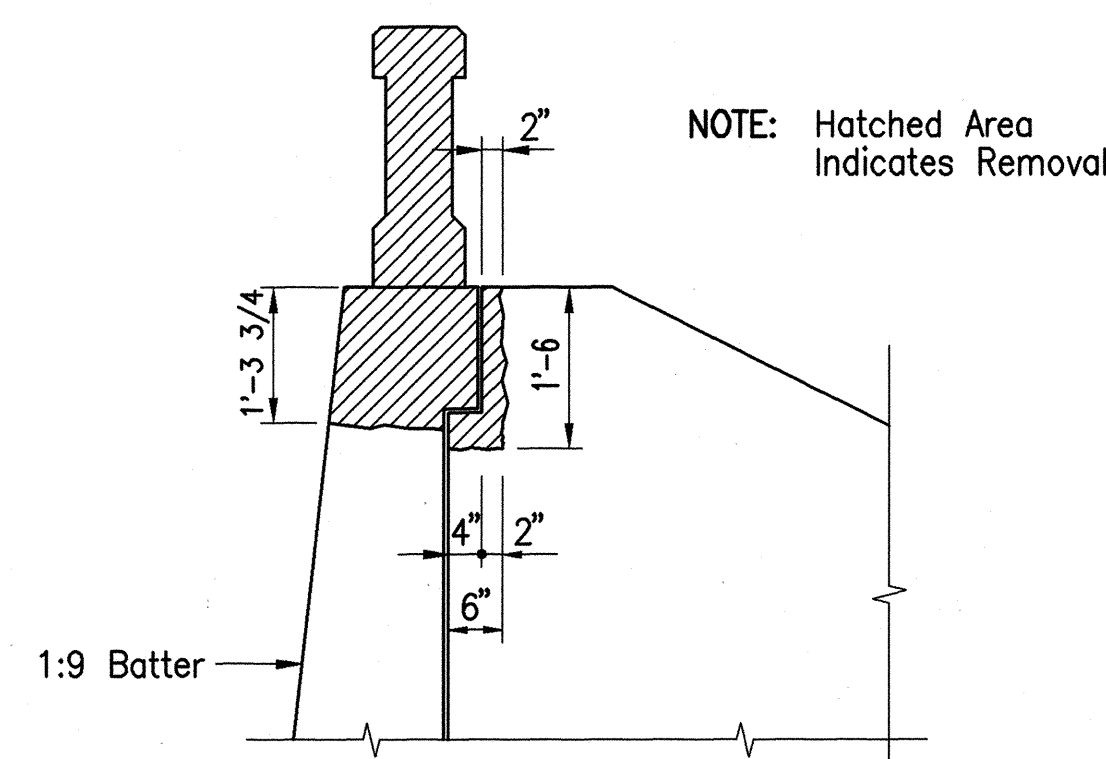
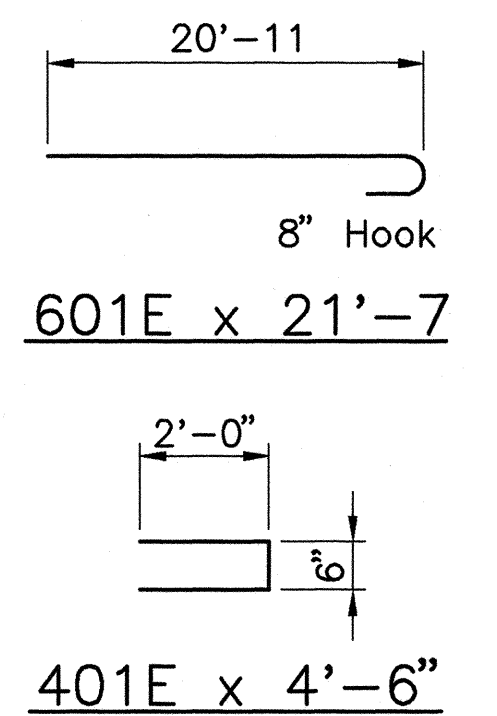
SCALE: 3/4" = 1'-0"

BILL OF MATERIALS FOR FLOOR SLAB

EPOXY COATED REINFORCING STEEL			
SIZE OR MARK	NUMBER OF BARS	LENGTH (FT.)	WEIGHT (LBS.)
601E	172	21'-7"	
#6E	164	22'-3"	
TOTAL #6E			11,057
401E	86	4'-6"	
TOTAL #4E			259
TOTAL REINFORCING STEEL			11,316

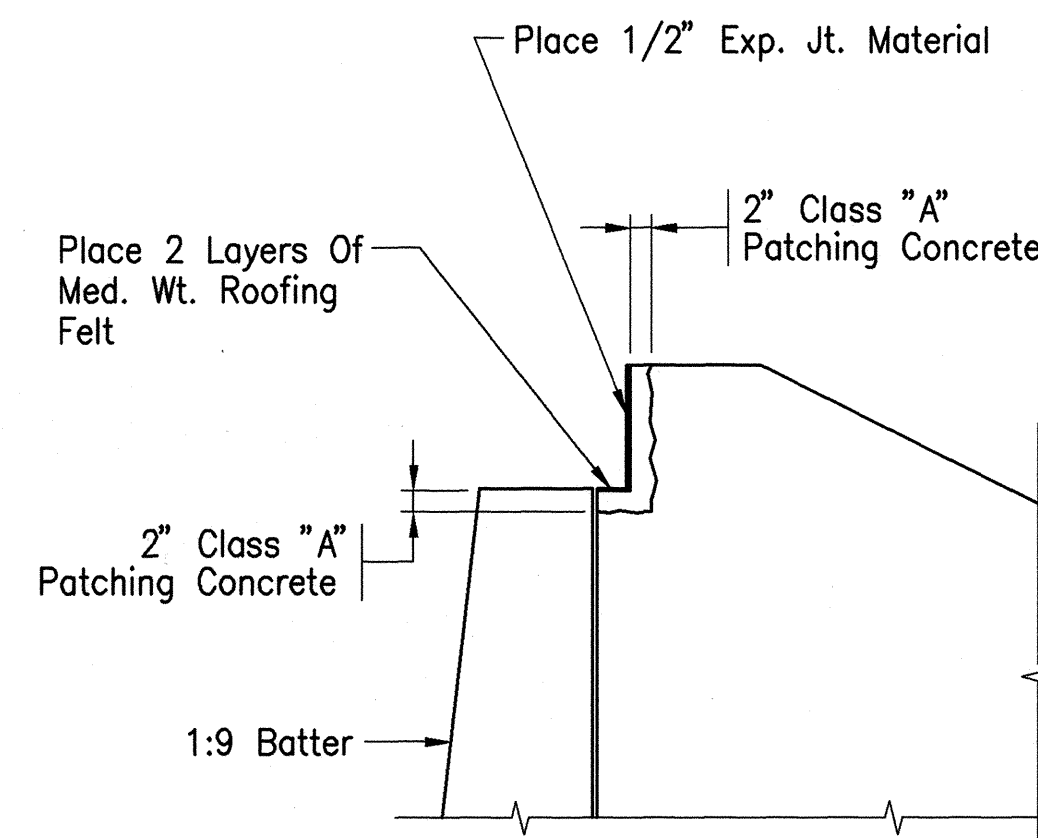
CONCRETE	
CONC. CLASS "C" IN SUPERSTR.	52.0 CYS.
MISCELLANEOUS	
PAVEMENT REMOVAL	104 SYS.
SUBBASE FOR CEMENT CONC. PVMT.	34 CYS.
CLASS "A" PATCHING CONCRETE	8 SFT.
SURFACE SEAL (EST. 3,107 SFT.)	LSUM
EPOXY COATED THREADED TIE BAR ASSEMBLIES	106 EACH

Includes Floor Slab, Bridge Rail, Copping, Spandrel Walls, 6" Of Underside Of Arch Ring And Exposed Faces Of Wingwalls.



REMOVAL SECTION @ WINGWALL

Scale: 1/2" = 1'-0"



RECONSTRUCTION SECTION @ WINGWALL

Scale: 1/2" = 1'-0"

NOTE:

"E" Designates Epoxy Coated Reinforcing Steel.

FLOOR SLAB DETAILS INDIANA DEPARTMENT OF TRANSPORTATION

SCALE: AS NOTED

DATE: October 13, 1995

Frank E. Sailer, Jr.

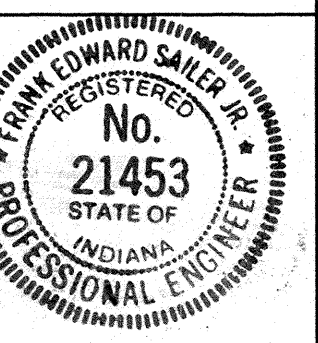
DRAWING: C-4 OF C-6 SHEET: 6 OF 36

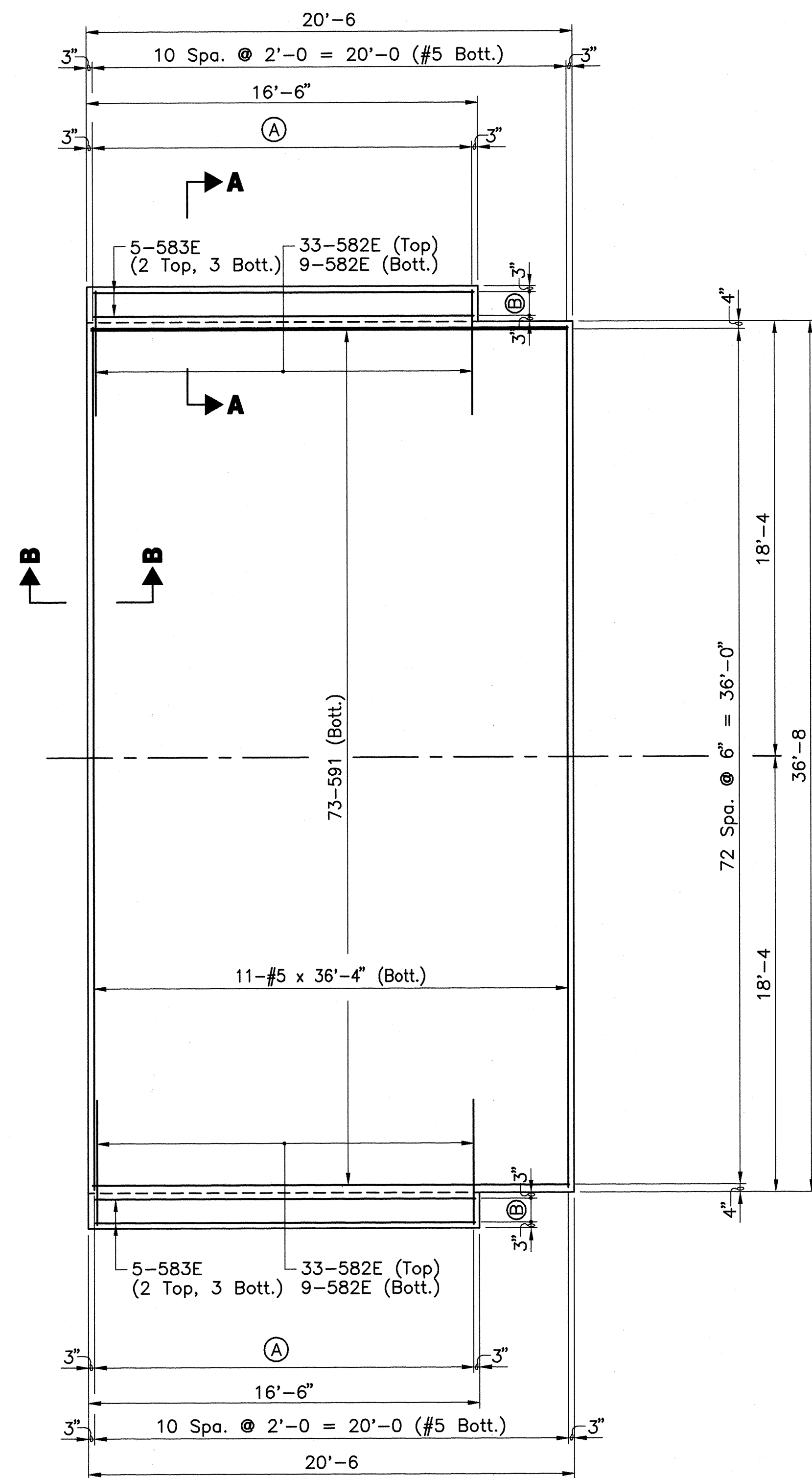
PROJECT: STP/4585(004)

BRIDGE CONTRACT NO. B-20401

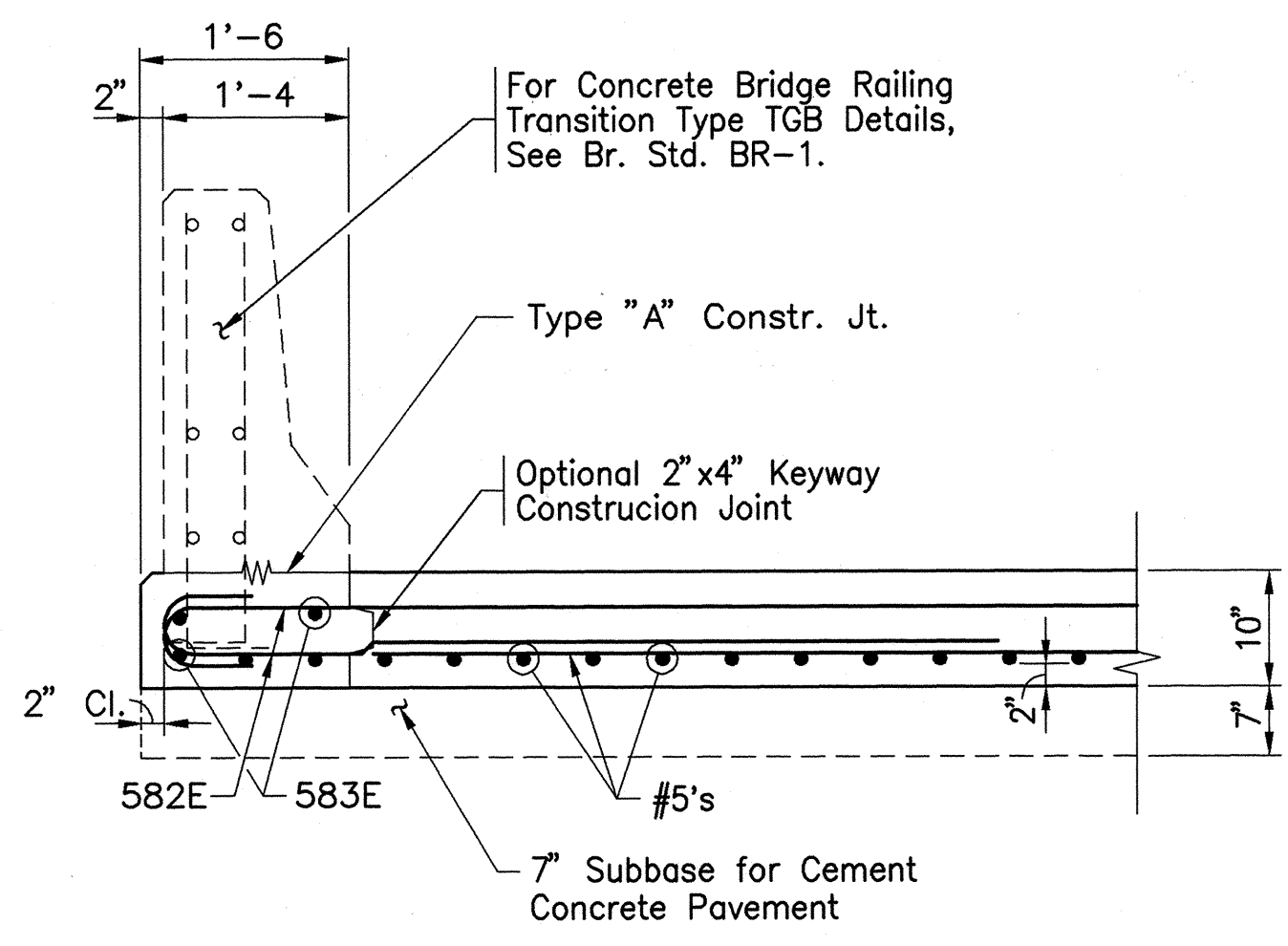
BRIDGE FILE: 13-85-3084A

DESIGNED	FES	C/K'D	FES
DRAWN	SLO	C/K'D	FES
PROJECT	9002	FILE	9002SLAB1

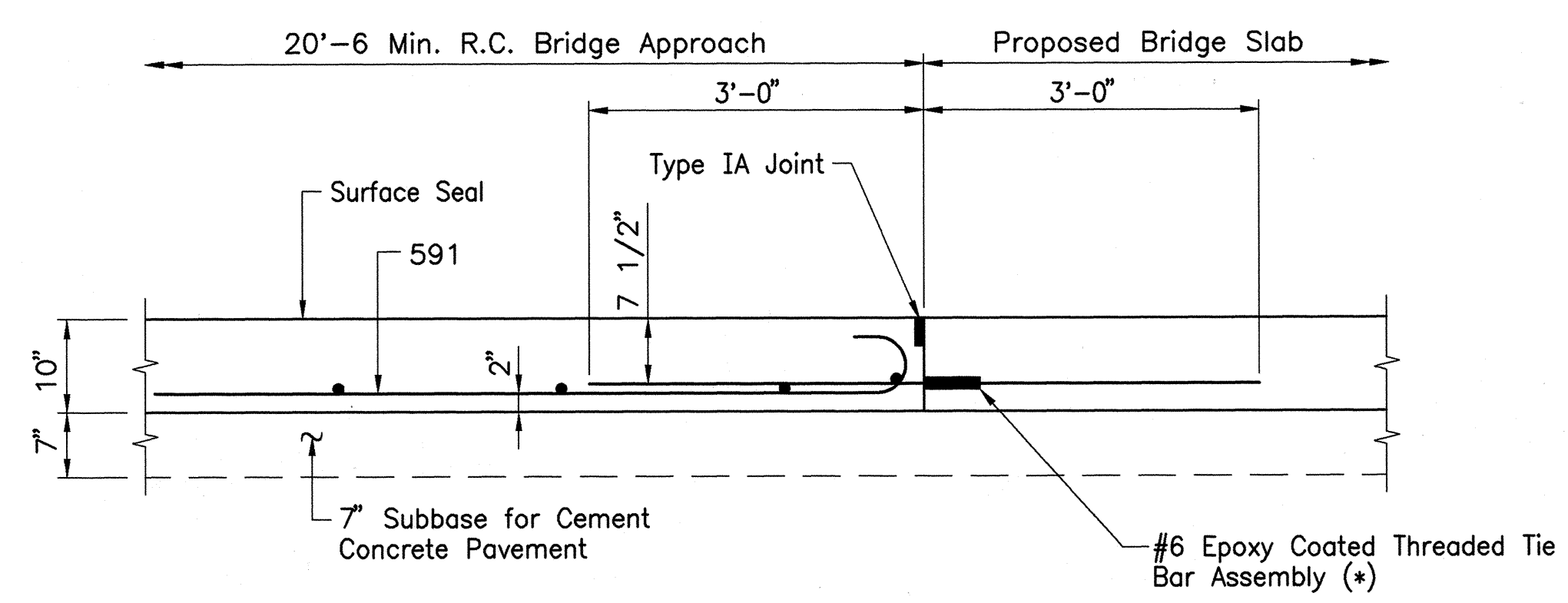




PLAN - NORTH APPROACH
(SOUTH APPROACH SAME BY 180° ROTATION)
Scale: 1/4" = 1'-0"

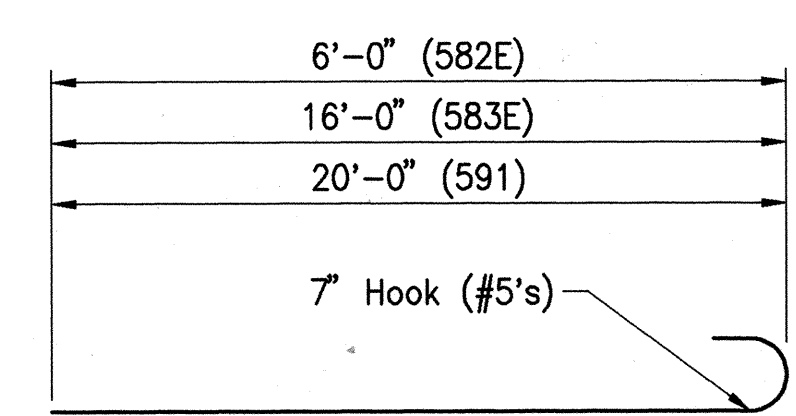


SECTION 'A-A'
Scale: 3/4" = 1'-0"



SECTION B-B
SCALE: 3/4" = 1'-0"

NOTE:
(*) Epoxy Coated Threaded Tie Bar Assemblies Billed With Bridge Floor Slab.



582E x 6'-7"
583E x 16'-7"
591 x 20'-7"

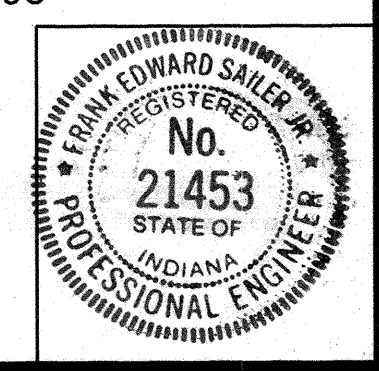
BILL OF MATERIALS FOR BRIDGE APPROACH SLAB (2 SLABS REQUIRED)			
EPOXY COATED REINFORCING STEEL			
SIZE OR MARK	NUMBER OF BARS	LENGTH (FT.)	WEIGHT (LBS.)
582E	84	6'-7"	
583E	10	16'-7"	
TOTAL #5E			750
REINFORCING STEEL			
591	73	20'-7"	
#5	11	36'-4"	
TOTAL #5			1,984
TOTAL REINFORCING STEEL			
			1,984
MISCELLANEOUS			
PAVEMENT REMOVAL			104 SYS.
SUBBASE FOR CEMENT CONC. PVM'T.			17 CYS.
10" REINFORCED CONCRETE PAVEMENT			89 SYS.
SURFACE SEAL (EST. 752 SFT.)			LSUM

- LEGEND**
- (A) 32 Spa. @ 6" = 16'-0" (Top)
8 Spa. @ 2'-0" = 16'-0" (Bott.)
 - (B) 1 Spa. @ 1'-0" = 1'-0" (Top)
2 Spa. @ 6" = 1'-0" (Bott.)

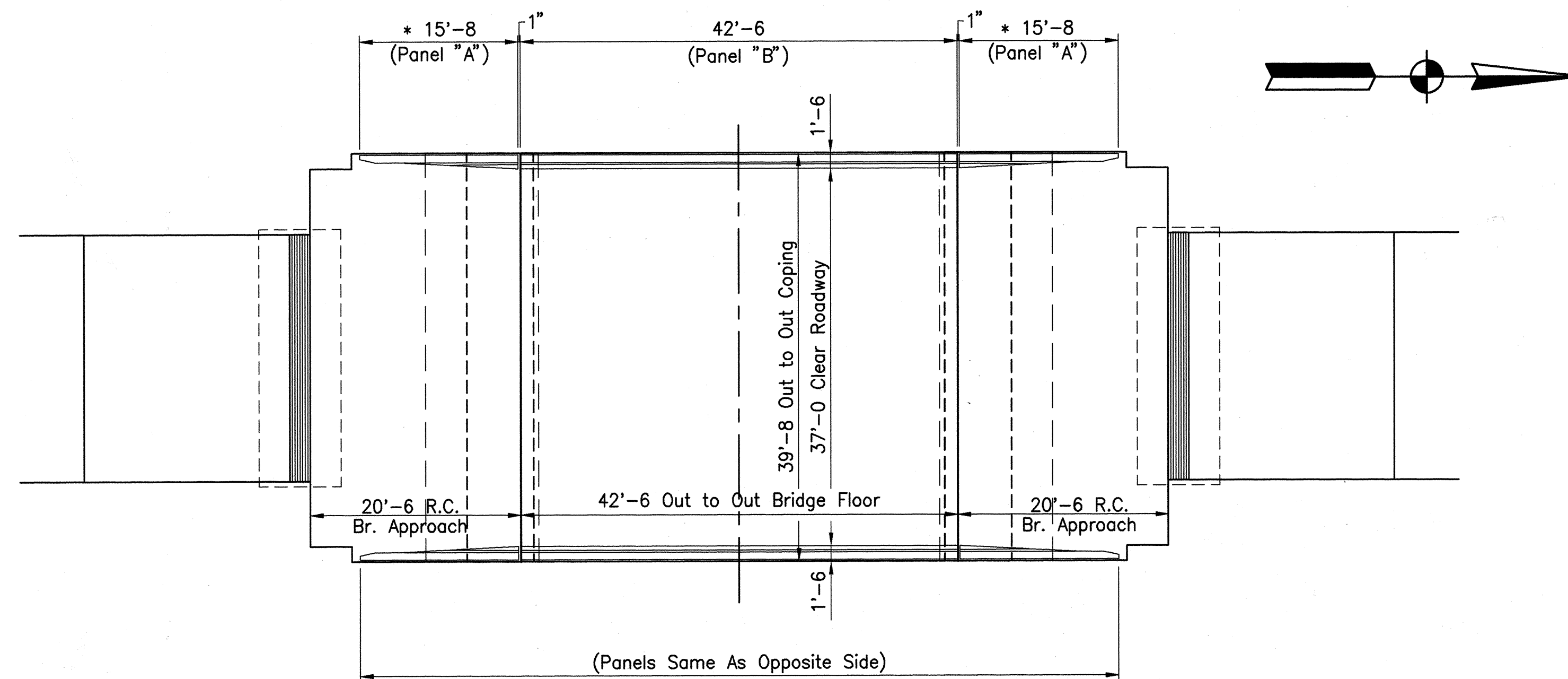
NOTES:
"E" Designates Epoxy Coated Reinforcing Steel.

R.C. BRIDGE APPROACH DETAILS
INDIANA DEPARTMENT OF TRANSPORTATION

SCALE: AS NOTED DATE: October 13, 1995
Frank E. Sailer Jr.
DRAWING: C-5 OF C-6 SHEET: 7 OF 36
PROJECT: STP/4585(004)
BRIDGE CONTRACT NO. B-20401
BRIDGE FILE: 13-85-3084A



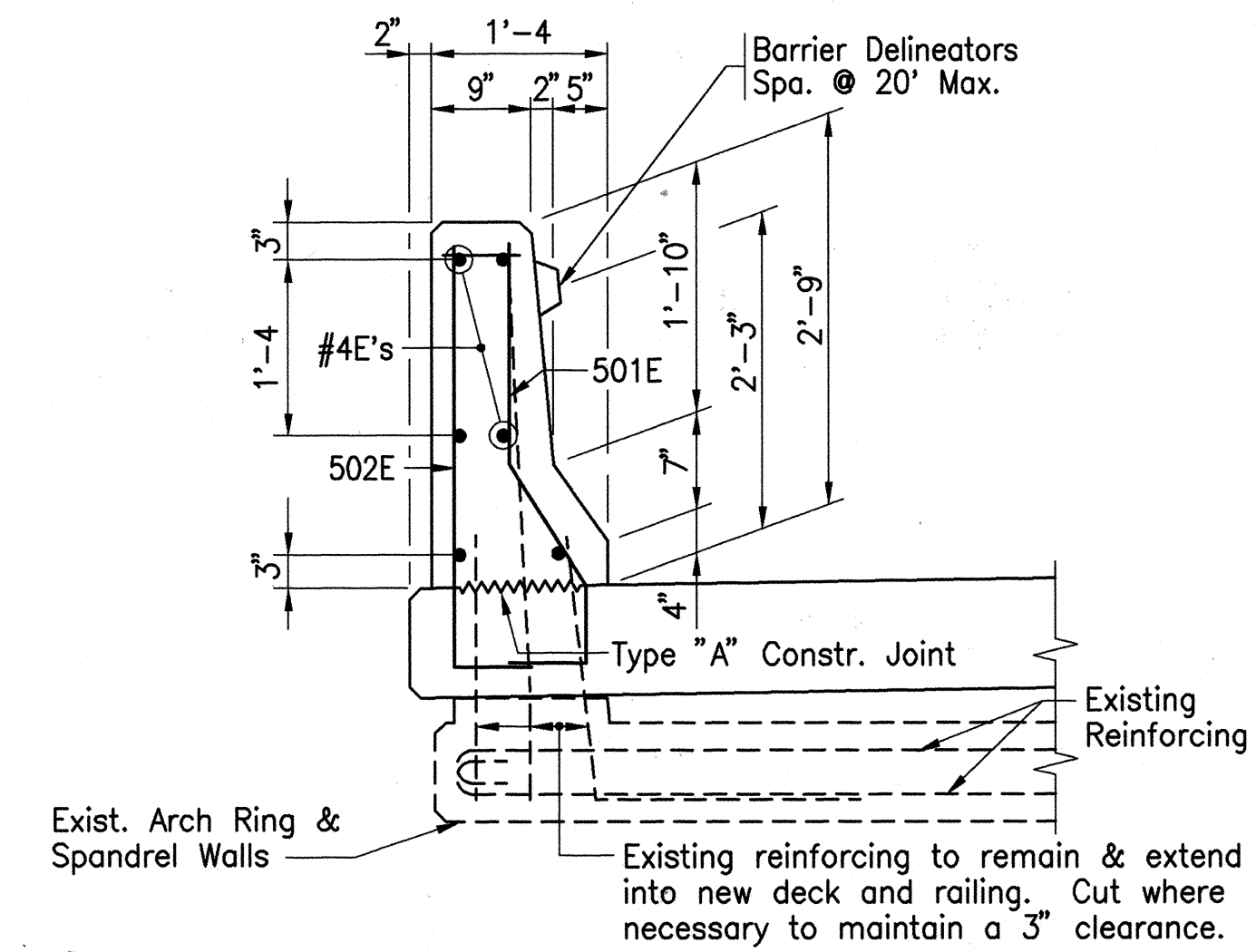
DESIGNED	VAD	CHECKED	SLO
DRAWN	9002	CHECKED	APP1
PROJECT		FILE	



* Panel "A" is a Concrete Bridge Rail Transition Typen TGB

CONCRETE BARRIER RAIL PLAN

NO SCALE

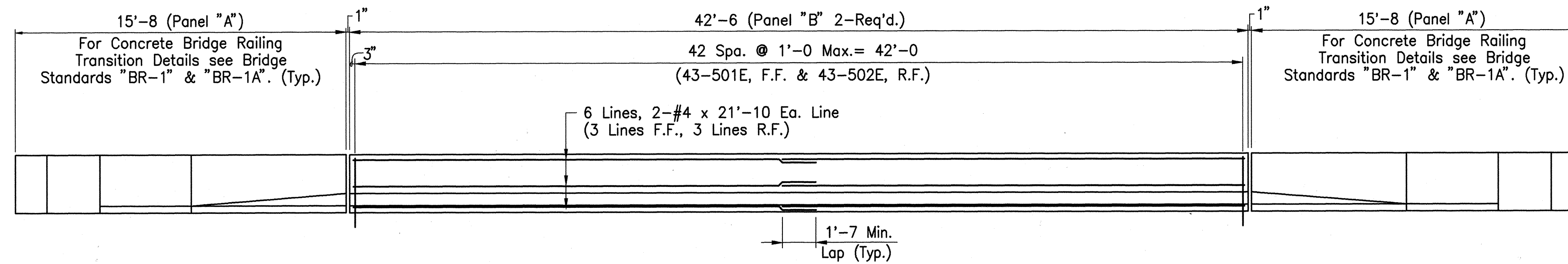
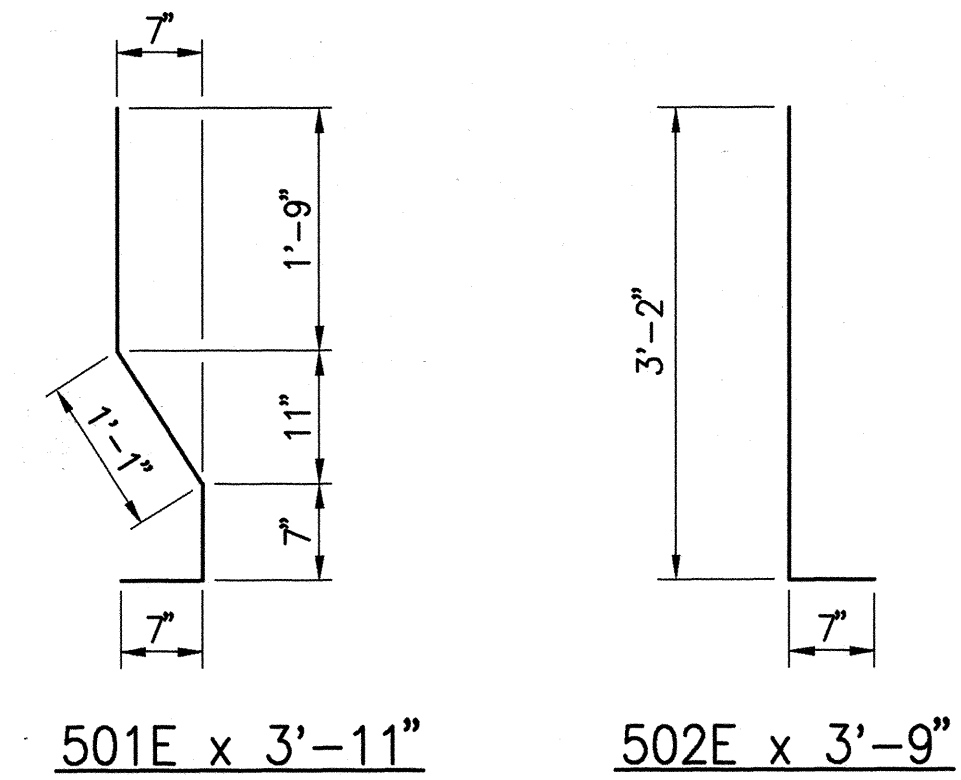


SECTION A-A

Scale: 3/4" = 1'-0"

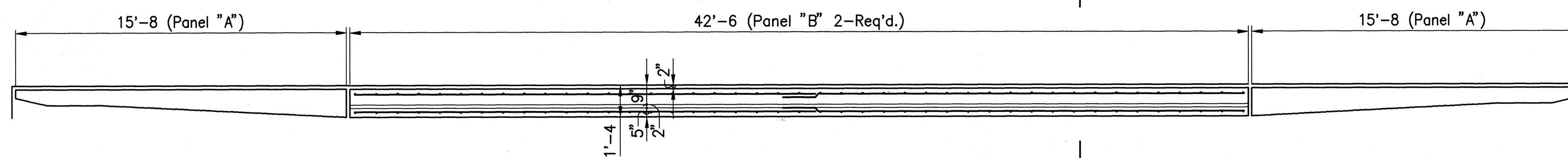
BILL OF MATERIALS FOR CONCRETE BRIDGE RAIL

EPOXY COATED REINFORCING STEEL			
SIZE OR MARK	NUMBER OF BARS	LENGTH (FT.)	WEIGHT (LBS.)
501E	86	3'-11"	
502E	86	3'-9"	
TOTAL #5			688
#4E	24	21'-10"	
TOTAL #4			350
CONCRETE			
Panel "B" (2 @ 4.1 Cys.)			8.2 CYS.
TOTAL CONCRETE CLASS "C" IN RAILING			8.2 CYS.
MISCELLANEOUS			
BARRIER DELINEATORS			8 EACH
CONC. BR. RAILING TRANS., TYPE "TGB"			4 EACH



PANEL ELEVATION

Scale: 1/4" = 1'-0"



PANEL PLAN

Scale: 1/4" = 1'-0"

NOTE:

"E" Designates Epoxy Coated Reinforcing Steel.

CONCRETE BRIDGE RAIL DETAILS INDIANA DEPARTMENT OF TRANSPORTATION

SCALE: AS NOTED

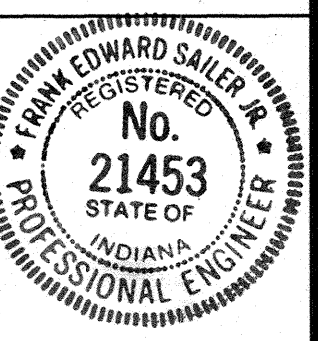
DATE: October 13, 1995

DRAWING: C-6 OF C-6 SHEET: 8 OF 36

PROJECT: STP/4585(004)

BRIDGE CONTRACT NO. B-20401

BRIDGE FILE: 13-85-3084A



DESIGNED: VAD & KayO
DRAWN: 9002
PROJECT: 9002RAIL